

INTELLIGENT INFRASTRUCTURE SOLUTIONS



Intelligent
Infrastructure
Solutions



iPatch
Services



iPatch
BusinessPartner
Program

Intelligent Infrastructure Solutions Overview	241
iPatch Operations Software	242
iPatch Control Systems	243
iPatch Copper Panels	244
iPatch Fiber Shelves.	246
iPatch Services	248
iPatch BusinessPartner Program	251

SYSTIMAX 360

Intelligent Infrastructure Solutions

Overview

Knowing how your physical infrastructure is connected is the key to controlling your network, reducing operating costs, improving efficiency and increasing reliability. Leveraging best-in-class SYSTIMAX® copper and fiber connectivity, the SYSTIMAX® iPatch® intelligent infrastructure operations solution is more than just hardware—it's a comprehensive, fully-supported solution that gives you the power you need to control your critical network infrastructure. Combining SYSTIMAX iPatch intelligent copper patch panels and fiber optic shelves with infrastructure operations software and control systems, SYSTIMAX brings you the real-time information you need about how your network is connected.



Intelligent
Infrastructure
Solutions

iPatch
Services

iPatch
Business Partner
Program

iPatch panels and shelves have integral sensors to determine connectivity changes—with no proprietary patch cord technology required. Control systems, such as the iPatch Panel Manager, collect information from all of the iPatch panels and shelves in a data center or equipment closet, and relay connectivity changes to the infrastructure operations software and iPatch System Manager.

The SYSTIMAX infrastructure operations solution provides the network administrator greater vision and network efficiency; the cabling administrator complete management; and the cabling technician intelligence to optimize physical layer management, improve reliability, and reduce downtime. Electronic work orders eliminate tedious paper-based administration and improve productivity. Work is guided at each iPatch panel by electronic visual and audio prompts to minimize patching errors. Users are instantly alerted to critical changes or conditions that require immediate attention and resolution.

Intelligent Infrastructure Management Brings Order to Chaos

Data and voice connections live or die in crowded telecommunications rooms where a single misplaced patch cord can wreak havoc and increase downtime. The iPatch system provides one-touch patch cord tracing, with both visual and audio prompts to guide every connection. It continuously monitors, verifies and logs port connections to keep your system running smoothly and instantly alerts you to problems.

Features:

- Provides accurate, automated documentation of changes to the physical layer
- Discovers network devices and maps them to the physical layer
- Provisions services and provides guidance for deployment in data centers or office environments
- Notifies administrators in real-time of any connectivity or equipment issues and alerts users of unauthorized access or activity
- Provides an integration interface for third party software

Benefits:

- Enhances productivity through automation and process efficiency
- Reduces costs associated with capacity and asset management
- Real-time enhanced location information for physical layer and networked assets
- Offers complete visibility and control of your physical layer infrastructure
- Simplifies the audit and tracking process to more easily address infrastructure compliance requirements

SYSTIMAX 360

SYSTIMAX 360

Intelligent Infrastructure Operations Software



System Manager Enterprise Edition



Intelligent
Infrastructure
Solutions



iPatch
Services



iPatch
BusinessPartner
Program

Intelligent Infrastructure Operations Software

SYSTIMAX Infrastructure Operations Software is your command central. The software provides all of the functionality required to document your structured cabling and patching systems for copper and fiber optic connections.

Key capabilities include the correlation of data from the physical layer infrastructure with that of your network and computing infrastructure – network switches, servers and other Internet Protocol (IP)-enabled endpoints. Discovering this network equipment and mapping it onto the physical layer gives you a full, end-to-end view of your data center, campus or workplace network, letting you know not only what is on your network, but where it is physically located.

In addition, the software can be used to provide a wide variety of reports on information collected from the network, guide patching through electronic work orders, determine available capacity and provisions services onto those available resources, and send events to other systems. Access through an XML API can be licensed for specific applications, such as an enhanced location service for emergency response in VoIP networks or for OLE for Process Control (OPC) clients. Packaged to meet your needs, iPatch System Manager Enterprise provides licenses for 2,000, 10,000 and Unlimited port installations.

Both Microsoft® Windows® and web-based clients are supported for user access to the system.

Warranty Information:

- Included with the initial purchase of SYSTIMAX Infrastructure Operations Software is a one year subscription to our annually renewable Software Assurance Program. More information can be found in the iPatch Services section of the catalog. In addition, the software is covered by an initial 90-day limited warranty against defects in materials and workmanship.

iPatch System Manager

Product Number	Detailed Description	Material ID
iP-SYS-MGR-ENT-2K	iPatch System Manager Enterprise 2000	760111187
iP-SYS-MGR-ENT-10K	iPatch System Manager Enterprise 10000	760111195
iP-SYS-MGR-ENT-UNL	iPatch System Manager Enterprise Unlimited	760090068
iP-UP-SYSMGR-2K-10K	iPatch Upgrade System Manager Enterprise 2K-10K	760111203
iP-UP-SYSMGR-2K-UNL	iPatch Upgrade System Manager Enterprise 2K-Unlimited	760111211
iP-UP-SYSMGR-10K-UNL	iPatch Upgrade System Manager Enterprise 10K-Unlimited	760111229

System Integrations

Product Number	Detailed Description	Material ID
iP-SYS-MGR-ELS-INT	iPatch System Manager Enhanced Location Service for Emergency Response	760083402
iP-SYS-MGR-OPC-INT	iPatch System Manager OPC Integration	760083410

Software Assurance

Detailed Description	Material ID
Software Assurance for iPatch System Manager Enterprise 2K	760111237
Software Assurance for iPatch System Manager Enterprise 10K	760111245
Software Assurance for iPatch System Manager Enterprise Unlimited	760090266

iPatch® Intelligent Infrastructure Control Systems

Control systems link your iPatch intelligent panels with the System Manager software. Each rack of iPatch intelligent panels is equipped with a control system—an iPatch Panel Manager or Rack Manager Plus — which monitors the status of every port. The control system sends connectivity updates to System Manager to ensure that you always have a real-time updated database of connectivity information.

SYSTIMAX control systems also provide technicians with a local user interface. To aid in tracing existing connections, the display provides end-to-end connectivity information, including the location of patch cords as well as the devices connected on either end of the circuit.

This wealth of information far surpasses the level of insight provided by traditional port or cord labels. In addition, control systems provide the added benefit of automatic updates when changes occur in the patching field or at the endpoints of a circuit.

The iPatch Control System enhances guided patching operations by displaying work orders generated by your System Manager software. A local display makes steps in the work order simple, displaying the ports to be connected or disconnected, as well as providing visual and audible feedback on the progress of that step. LEDs on iPatch panels aid the process, too, lighting up to signal each patching change.

For unguided operations, the iPatch Control System can be used to confirm changes made on iPatch panels. All connectivity changes in iPatch panels are automatically detected by the control system and forwarded on to iPatch System Manager, where alerts for unauthorized changes can be forwarded to systems administrators.



SYSTIMAX 360 iPatch Network Manager



SYSTIMAX 360 iPatch Panel Manager



Rack Manager Plus Kit

Intelligent
Infrastructure
Solutions

iPatch
Services

iPatch
Business Partner
Program

SYSTIMAX 360 iPatch Panel Manager Features and Benefits:

- Innovative, cost effective, space-saving technology and design simplifies deployment, requiring no more than 1RU of space
- Supports up to 45 panels, depending on specific panel configuration
- Localized display language support includes Danish, English, French, German, Italian, Russian, Chinese, Korean, Polish, Portuguese and Spanish
- Panel Manager package contents contains: universal power supply, 16-inch panel bus jumper, 7 ft. patch cord, forty four position bus panel
- Features the elegant SYSTIMAX 360 design

SYSTIMAX 360 iPatch Network Manager Features and Benefits:

- Innovative, cost effective, space-saving technology and design simplifies deployment which easily mounts on the 1U bracket provided with Panel Manager
- Utilizes the display of the Panel Manager for configuration, including IP settings
- Supports PING response for use when troubleshooting IP connectivity
- Network Manager package contents contains: 6-inch patch cord, power jumper cable

Warranty Information:

- The intelligent infrastructure control systems are active components covered by the SYSTIMAX iPatch System Active Components 3-Year Product Warranty.

Product Number	Detailed Description	Material ID
360-iP-PANEL-MGR	SYSTIMAX 360 iPatch Panel Manager	760095562
360-iP-NET-MGR-MOD	SYSTIMAX 360 iPatch Network Manager Module	760105353
iP-RACK-MGR-PLUS	SYSTIMAX 360 iPatch Rack Manager Plus	760024588

iPatch® Intelligent Copper Panels

Intelligent
Infrastructure
Solutions

iPatch
Services

iPatch
BusinessPartner
Program

Building on the industry-leading performance of SYSTIMAX 1100-series GigaSPEED® XL and GigaSPEED X10D panels, iPatch 1100GS3 and 1100GS5 copper patch panels provide intelligence for managing your network infrastructure. Both 1100GS3 and 1100GS5 iPatch panels are available in either 24-port 1U or 48-port 2U models.

The SYSTIMAX 360 “iPatch-ready” copper panels can be upgraded in the field at a later stage with the 360 iPatch Upgrade Kit. The upgrade can be performed without network disruptions, since it does not require the removal of patch cords. The SYSTIMAX 360 solution offers customers the option to deploy intelligence immediately or in phases, according to their needs and budgetary requirements. By providing a clear strategy that includes an upgradeable product line, CommScope intends to bring intelligence to the masses and raise awareness of the business benefits of intelligent infrastructures.

The iPatch M4200i intelligent universal modular panels feature the ability to support individual M-series copper information outlets for either unshielded twisted pair (UTP) or foil twisted pair (FTP) applications in a 24-port 1U panel.

iPatch intelligent copper patch panels provide unequalled Vision into changes in your physical layer infrastructure. This Vision is combined with Knowledge provided by iPatch System Manager software to deliver the Control you need to manage your network.

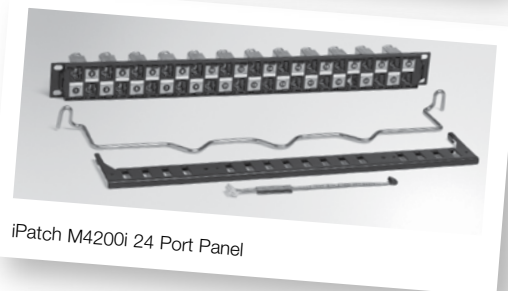
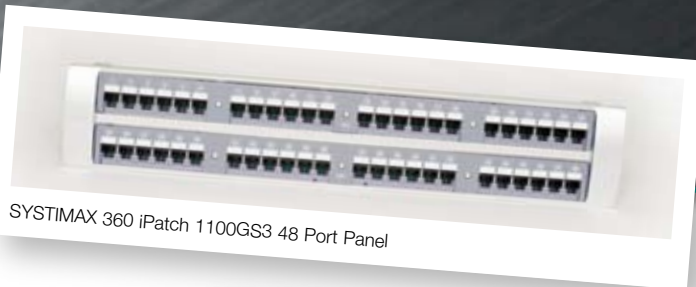
Features and Benefits:

- All panels feature a one-button tracing function with an LED indicator per port
- Each port detects the insertion or removal of standard patch cords and reports changes to the iPatch Control System
- iPatch 1100 series panels are available in 24- and 48-port configurations
- iPatch M4200i panels support both UTP and FTP applications up to GigaSPEED X10D performance

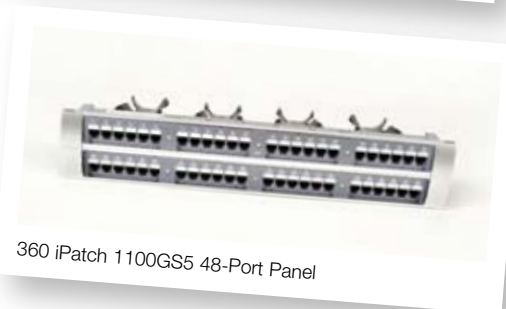
Warranty Information:

The passive components in the panel qualify for the same SYSTIMAX Structured Connectivity Solutions 20-year Extended Product Warranty and Applications Assurance as standard SYSTIMAX copper panels when included in a certified SYSTIMAX PowerSUM, GigaSPEED XL or GigaSPEED X10D channel. The active components, including

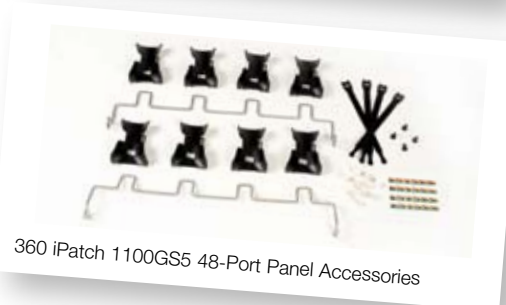
SYSTIMAX 360 iPatch 1100GS3 48 Port Panel



iPatch M4200i 24 Port Panel



360 iPatch 1100GS5 48-Port Panel



360 iPatch 1100GS5 48-Port Panel Accessories



360 iPatch 1100GS5 24-Port Panel



360 iPatch 1100GS5 24-Port Panel (Back)

SYSTIMAX 360 iPatch 1100GS3 Features and Benefits:

- Supports network line speeds in excess of 1 Gbps
- Backwards-compatible with Category 5e, 5, and 3 cords and cables; however, optimal performance is achieved when used with GigaSPEED GS8E cords
- Certified component of an integrated GigaSPEED XL solution
- SYSTIMAX 360 iPatch 1100GS3 panels feature the elegant SYSTIMAX 360 design

SYSTIMAX 360 iPatch 1100GS5 Features and Benefits:

- Supports network line speeds in excess of 10 Gbps
- Backwards-compatible with Category 6, 5e, 5, and 3 cords and cables; however, optimal performance is achieved when used with GigaSPEED GS10E cords
- Certified component of an integrated GigaSPEED X10D solution
- SYSTIMAX 360 iPatch 1100GS5 panels feature the elegant SYSTIMAX 360 design

iPatch M4200i Features and Benefits:

- Supports M-Series copper information outlets, including Cat 3, PowerSUM, GigaSPEED XL and GigaSPEED X10D
- Supports unshielded twisted pair (UTP) and foil twisted pair (FTP) deployments
- Certified component of PowerSUM, GigaSPEED XL or GigaSPEED X10D channels based on the type of information outlet and patch cord installed
- Available either as bare panel for UTP or packaged with 24 M-series GigaSPEED X10D FTP information outlets (MFP520)
- May be available in other pre-packaged combinations – contact your local BusinessPartner or visit our Web site at www.commscope.com/systimax for a complete list of product offerings
- Includes a jack insertion/removal tool

Product Number	Detailed Description	Material ID
360-iP-1100-GS3-24	360 iPatch 1100GS3 24-Port Panel	760104984
360-iP-1100-GS3-48	360 iPatch 1100GS3 48-Port Panel	760105007
360-iP-1100-GS5-24	360 iPatch 1100GS5 24-Port Panel	760107771
360-iP-1100-GS5-48	360 iPatch 1100GS5 48-Port Panel	760107789
360-iP-UP-KIT-1100-24	360 iPatch Upgrade Kit for 360 1100 24 Port Panel	760104992
360-iP-UP-KIT-1100-48	360 iPatch Upgrade Kit for the 360 1100 48 Port Panel	760105015
iP-1100GS3-24 iPatch	1100GS3 24-Port GigaSPEED XL Intelligent Patch Panel	760067694
iP-1100GS3-48 iPatch	1100GS3 48-Port GigaSPEED XL Intelligent Patch Panel	760067702
iP-1100GS5-24 iPatch	1100GS5 24-Port GigaSPEED X10D Intelligent Patch Panel	760051003
iP-1100GS5-48 iPatch	1100GS5 48-Port GigaSPEED X10D Intelligent Patch Panel	760051011
iP-M4200i-24	iPatch M4200i 24-Port UTP, Blank without Modules (For use in UTP Installations)	760073866
iP-M4200i-24-FTP	iPatch M4200i 24-port FTP, Blank without Modules (For use in FTP Installations)	760116665
iP-M4200i-24MFP520	iPatch M4200i 24-Port Intelligent Universal Modular Panel with MFP520 FTP Information Outlets	760083295

For the latest information on available SYSTIMAX 360 iPatch intelligent copper panels, please visit www.commscope.com or contact your CommScope sales representative.

SYSTIMAX 360

iPatch® Intelligent Fiber Optic Shelves

Intelligent
Infrastructure
Solutions

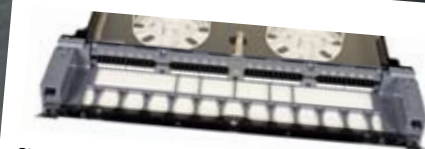
iPatch
Services

iPatch
BusinessPartner
Program

iPatch Intelligent Fiber Shelves provide solutions for both SC and LC installations that support the SYSTIMAX fiber portfolio—LazrSPEED®, TeraSPEED® and OptiSPEED® applications. iPatch Intelligent Fiber Optic Shelves support both simplex and duplex patch connections. Models are available with fixed or sliding fiber trays, and MPO versions are also available.

The SYSTIMAX 360 1 U optical fiber shelves are “iPatch-Ready” and can be upgraded in the field at a later stage with the 360 iPatch Upgrade Kit. The upgrade can be performed without network disruptions, since it does not require the removal of patch cords. The SYSTIMAX 360 solution offers customers the option to deploy intelligence immediately or in phases, according to their needs and budgetary requirements. By providing a clear strategy that includes an upgradeable product line, CommScope intends to bring intelligence to the masses and raise awareness of the business benefits of intelligent infrastructures.

iPatch intelligent fiber optic shelves provide unequalled Vision into changes in your physical layer infrastructure. This Vision is combined with Knowledge provided by iPatch System Manager software to deliver the Control you need to manage your network.



SYSTIMAX 360 iPatch G2 Fiber Shelf



SYSTIMAX 360 iPatch G2 High Density Fiber Shelf

Features and Benefits, SYSTIMAX 360 iPatch Fiber Shelves

- Bend limiters maximize space by integrating into the shelf trough
- Push/push-style latch on the front trough door improves access to shelf interior
- Unique open-floor trough design enhances access for patch cord latching and de-latching
- Displays intuitively-placed port labeling when door is open
- Features the elegant SYSTIMAX 360 design
- Offered in fixed and sliding options
- Available in 1RU and 2RU sizes (SYSTIMAX 360 iPatch G2 Fiber Shelves available in 1U only)

Features and Benefits, iPatch Pre-Terminated/MPO Shelves

- 12-fiber MPO connector-based modular design for simple connections
- Factory-terminated and tested modules for instant field connections and guaranteed quality and performance
- Designed for the administrative convenience of guaranteed transmit-to-receive connectivity
- No special or non-standard polarity components
- Supports easy reconfiguration for moves, adds and changes
- Easy upgrade path to parallel connectivity and associated applications

Features and Benefits, iPatch Intelligent Fiber Optic Shelves

- Hinged front door for easy access
- Front cable management trough
- Top cover panel
- Standard water-tight cable entry conduit connectors
- Blank labels for identifying fiber splices and terminations

Warranty Information:

The passive components in iPatch standard and pre-terminated fiber shelves qualify for the same SYSTIMAX 20-year Extended Product Warranty and Applications Assurance as standard 600-series or InstaPATCH fiber shelves when included in a certified SYSTIMAX LazrSPEED, TeraSPEED or OptiSPEED channel. The active components, including the fiber shelves' tracing and sensing modules, are covered by the SYSTIMAX iPatch System Active Components 3-year Product Warranty.

iPatch Intelligent Fiber Optic Shelves

Product Number	Ports	Connector	Cable Type	Sleeve Type	Shelf Type	Material ID
360-iP-G2-1U-LC-FX	24	Duplex LC	Multimode/Single-mode	Ceramic	Fixed	760105163
360-iP-G2-1U-LC-SD	24	Duplex LC	Multimode/Single-mode	Ceramic	Sliding	760105171
360-iP-UP-KIT-G2-LC	24	Duplex LC	Multimode/Single-mode	N/A	Fixed/Sliding	760105148
iP-600A-12-SC-MMF	12	Duplex SC	Multimode	Ceramic	Fixed	760005595
iP-600B-12-SC-MMF	12	Duplex SC	Multimode	Ceramic	Sliding	760005629
iP-600A-12-SC-SMF	12	Duplex SC	Single-mode	Ceramic	Fixed	760010777
iP-600B-12-SC-SMF	12	Duplex SC	Single-mode	Ceramic	Sliding	760010785
iP-600A-24-LC	24	Duplex LC	Multimode/Single-mode	Ceramic	Fixed	760017848
iP-600B-24-LC	24	Duplex LC	Multimode/Single-mode	Ceramic	Sliding	760017855

SYSTIMAX 360 iPatch G2 High Density Fiber Shelves

Product Number	Ports	Connector	Cable Type	Sleeve Type	Shelf Type	Material ID
360-iP-HD-2U-IP-SD	up to 72	Duplex LC	All Types	Ceramic	Sliding	760093336
360-iP-HD-MOD-LC-LS	24	Duplex LC	LazrSPEED	Ceramic	Sliding	760093344
360-iP-HD-MOD-LC-LS-3	72	Duplex LC	LazrSPEED	Ceramic	Sliding	760093351
360-iP-HD-MOD-LC-TS	24	Duplex LC	TeraSPEED	Ceramic	Sliding	760093369
360-iP-HD-MOD-LC-TS-3	72	Duplex LC	TeraSPEED	Ceramic	Sliding	760093377
360-iP-HD-MOD-LC-OS	24	Duplex LC	OptiSPEED	Ceramic	Sliding	760093385
360-iP-HD-MOD-LC-OS-3	72	Duplex LC	OptiSPEED	Ceramic	Sliding	760093393

iPatch® Services

Intelligent
Infrastructure
Solutions

iPatch
Services

iPatch
BusinessPartner
Program

Services Overview

iPatch Services allows customers to leverage SYSTIMAX Solutions' technology expertise and support to get more value out of their purchase, minimize impact to internal resources, and protect their investment.

- With our Configuration Service, your system installation will be certified and your database accurately provisioned
- With our Software Assurance Program, your infrastructure operations software will never be out of date
- With our Hardware Extended Warranty Program, you can rest assured if something breaks under warranty, it will be replaced

Configuration Service

Get More from Your Intelligent Infrastructure Investment

Let SYSTIMAX Solutions help you get your intelligent infrastructure management system up and running quickly and successfully to generate more value from your solution. With SYSTIMAX Solutions handling the initialization, you can start using your iPatch System right away rather than spending time setting it up. With the SYSTIMAX iPatch Configuration Service, you will benefit from the following:

- Experts that can quickly configure the iPatch hardware and software, saving you time and money and ensuring you are up and running with your mission-critical operations
- A knowledgeable team that can correctly set up your database and initialize the solution, eliminating frustrations and ensuring that you have a working system
- On the spot training and quick start instructions from a seasoned intelligent patching technician who can give you tips on how to get the most from your system

The Configuration Service includes all configuration, initialization, troubleshooting, and testing so you are guaranteed a fully validated and tested solution prior to production. With the service, you get the following:

- Certified Technician provided by SYSTIMAX Solutions
- Offsite support, including:
 - Kick-off meeting to gather detailed requirements and plan the project, including timelines and deliverables
 - Processing and consolidation of "As Built" and other drawings
 - Initial building of your customer database
 - Project management and project schedule
- Onsite support, including:
 - Hardware inspection and configuration of active components
 - iPatch System Manager Software installation
 - Completed building of the customer database
 - Testing and review
 - Troubleshooting if needed
 - iPatch Product Registration including hardware and software registration
 - Walk through orientation that includes tips and tricks for using the iPatch System
 - Welcome Package with reference materials for your new system
- Quality guarantee going into production

Software Assurance

More than Just Hardware

Infrastructure operations software, such as the iPatch System Manager, is at the core of our intelligent infrastructure solution. It is the bridge that connects you to the physical layer technology and provides you the ability to better monitor and control your physical infrastructure in ways you never imagined.

With the Software Assurance program, you can rest assured that your investment in the iPatch Solution from SYSTIMAX is up to date and available to support your business.



Protecting Your Investment

Our Software Assurance Program ensures you will get peak performance from your iPatch System Manager software by providing a full range of online services including version updates and upgrades.

Not only will you be eligible to receive our regular Service Packs, you will also receive any new versions of the product that are released during the term of your agreement. Your business can take advantage of new features and functionality as they become available. It's all a part of our easy-on-the-budget Software Assurance Program.

Included Features

- Online software assurance services
- Access to iPatch web support via InSite
- Access to FAQs and Knowledge Base
- Maintenance releases and service packs
- Version upgrades
- Access to user documentation and release notes
- Access to user forums
- Ability to submit software issues and questions

Your Software Assurance subscription comes with:

Product Upgrades and Service Packs

- Notification by letter when upgrades are available
- Convenient delivery options—download or CD
- Notification by e-mail when service packs and upgrades are available for download

Online Software Support

- Ask questions regarding software features and functionality
- Submit software support trouble tickets

E-Newsletters, User Documentation and Release Notes

- Distributed every quarter and with every release
- Up-to-date information on the latest product features and enhancements
- FAQs and tips to get the most out of your software

Knowledgebase

- A mini-training and troubleshooting Web-based system that provides answers to your technical questions
- Available for use 24 hours a day, 7 days a week

Online Account Information

- View product information
- Participate in user forums

Is Software Assurance Right for Your Business?

Software Assurance is a maintenance plan for businesses that want to keep their systems reliably running on the latest software without paying full price for upgrades. Every time we release a new version of your software, we automatically send it to you. All you have to do is keep your Software Assurance subscription current.

If you are a current SYSTIMAX iPatch customer and would like to purchase or get more information about Software Assurance, contact your local SYSTIMAX sales representative.



Intelligent
Infrastructure
Solutions

iPatch
Services

iPatch
BusinessPartner
Program



Intelligent
Infrastructure
Solutions



iPatch
Services



iPatch
BusinessPartner
Program

iPatch Hardware Warranty

SYSTIMAX understands that network management is critical to your business operations. For this reason, our Standard iPatch Hardware Warranty is three years and covers both parts and labor, provided your installation has been installed and certified by a SYSTIMAX Solutions iPatch Certified BusinessPartner.

Included Features

With our iPatch Hardware Warranty Program, you can rest assured that your hardware will be replaced quickly in the event of a failure. With the SYSTIMAX iPatch Hardware Warranty you get the following:

- We cover the parts and, in most instances, the labor costs associated with the hardware replacement
- Access to SYSTIMAX iPatch Web Support via InSite for online hardware registration

Complement Your SYSTIMAX 20-Year Warranty

With SYSTIMAX, you have always been able to enjoy the peace of mind associated with a 20-year warranty on passive components. Now you can get that same peace of mind with a warranty that extends the guarantee on your iPatch System active hardware components from the industry standard of one year to three years.

SYSTIMAX InSite

Web-Based Technical Support Services

SYSTIMAX InSite, an intelligent web-based service center, sets a new standard for self service and remote technical support for our iPatch System. InSite provides real-time, personalized access to in-depth product information anytime you have a question. In addition, with InSite, you have the ability to download software updates and upgrades, review tracking of your maintenance assistance requests, ask SYSTIMAX support staff questions, and get fast, accurate answers to commonly asked questions and troubleshooting recommendations.

SYSTIMAX InSite offers a unique approach to SYSTIMAX service and support with anytime, anywhere access to SYSTIMAX expertise and extensive self-help capabilities.

SYSTIMAX InSite Features and Functionality

Backed by CommScope Labs, the SYSTIMAX InSite service center features the following capabilities:

InSite Self-Help

Real-time access to continuously updated technical documentation, notifications, user guides, software updates and Knowledge Base answers to frequently asked questions:

- How-to instructions
- Trouble shooting guidelines
- Frequently asked questions

InSite Technician Assisted Service

Use email to ask a question, describe a problem, or request information and receive an email response. My InSite lets you view and track online the status of your assistance requests.

Benefits

The SYSTIMAX InSite enhances productivity by streamlining solution maintenance and configuration with convenient anytime, anywhere access to support services. You will receive fast responses and quick resolution of issues affecting your physical layer infrastructure. Self-service lets you access up-to-the-minute maintenance solutions, helping you maximize efficiencies. The SYSTIMAX InSite self-help capabilities, technician-assisted expertise, and powerful Knowledgebase of answers set InSite as the standard for technical support service.

Visit SYSTIMAX InSite online at <http://systimaxinsite.custhelp.com>.

iPatch® BusinessPartner Program

BusinessPartner Program Levels

Our BusinessPartners are selected based on criteria such as their technical ability, market experience, quality, customer service, commercial stability and target markets, so that CommScope customers receive the highest standards of operational support and technical expertise in the market.

Designed to provide the resources to help you deliver industry-leading products and services and high levels of customer satisfaction, there are two partner levels designed to meet the needs of your company.

Certified iPatch Solution BusinessPartner

- The Certified iPatch Solution BusinessPartners provide setup, configuration and support services including the design, installation and configuration of complete iPatch projects. In addition, Certified iPatch Solution BusinessPartners offer both hardware and software extended warranties, customer onsite iPatch system support services and iPatch based managed services (for example Moves, Adds, Changes).

Certified iPatch System Integrator

- The Certified iPatch System Integrators have demonstrated software configuration, development and integration expertise. System Integrators provide iPatch software setup, configuration and support services, as well as post-deployment integration services that focus on integrating iPatch into the IT workflow processes. When required, Certified iPatch System Integrations team up with an Authorised / Certified BusinessPartner, or Certified iPatch Solution BusinessPartner to install a fully functional Intelligent Infrastructure Solution, which includes a CommScope Structured Cabling Solution comprising of cabling and apparatus.

To find an iPatch BusinessPartner near you, contact your local CommScope sales representative or visit www.commscope.com.

